

PVC Gas Protection Sleeves

NON-PRESSURE-RATED PVC PROTECTION SLEEVE PIPE



DELIVERING GOOD WATER TO YOU



FOLLOWS PHYSICAL /
TESTING REQUIREMENTS OF: UL 651

MARKETS



Gas Protection **(Not for Natural Gas)**

DESCRIPTION



Available Pipe Sizes

1¼", 1½", 2", 3", 4", 6", 8", 10", 12"

Nominal Laying Length: 20 feet *(Laying length tolerances are in accordance with requirements listed above)*

Color: ■ Yellow

ASTM D1785

Schedule 40



BENEFITS

INSTALLATION

Lightweight, great for manual installation.

Field-cut with a power saw or handsaw;
bevel without complicated machinery.

Does not need lining wrapping, coating,
or cathodic protection to prevent
galvanic corrosion.

FEATURES

Unaffected by corrosive elements: sewer
gas, sulfuric acid, alkaline, or acidic soils.

Superior dielectric strength.

Feasible for underground installations
& direct burials.



PVC Gas Protection Sleeves

NON-PRESSURE-RATED PVC PROTECTION SLEEVE PIPE



DELIVERING GOOD WATER TO YOU

SUBMITTAL AND DATA SHEET

Schedule 40 (Follows ASTM D1785 Dimension Standard)

PIPE SIZE (IN)	AVERAGE O.D. (IN)	NOMINAL I.D. (IN)	MINIMUM T. (IN)	APPROX. WGT. (LBS/FT)	PIPE STIFFNESS (PSI)
1¼	1.660	1.363	0.140	—	1397
1½	1.900	1.592	0.145	0.5287	1008
2	2.375	2.048	0.154	0.7108	596
3	3.500	3.042	0.216	1.4320	509
4	4.500	3.997	0.237	2.3253	307
6	6.625	6.031	0.280	3.6228	164
8	8.625	7.942	0.322	—	104
10	10.750	9.976	0.365	8.1080	78
12	12.750	11.889	0.406	10.2967	64

Follows Physical / Testing Requirements of: UL 651

Tested in Accordance to: UL 651

Pipe Compound: ASTM D1784 Cell Class 12454

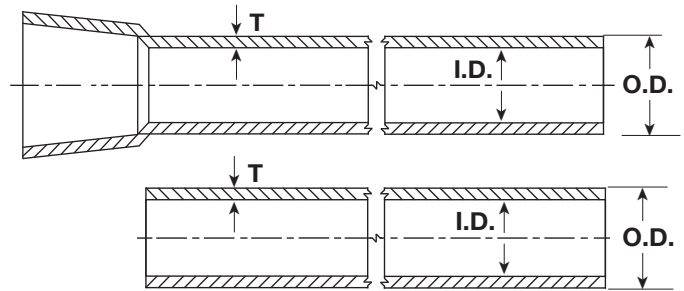
Pipe End Finish: Bell End, Plain End

Nominal Laying Length: 20 feet

(Laying length tolerances are in accordance with requirements listed above)

Installation: JM Eagle™ Solvent Weld Installation Guide

This data sheet does not purport to address all the safety problems associated with its use. It is the responsibility of whoever uses the gas sleeve to consult and establish safety and health practices and to determine the applicability of regulatory limitations prior to use.



T: (Wall Thickness) **O.D.:** (Outside Diameter) **I.D.:** (Inside Diameter)

