

# Solvent Weld DWV | SOLID/CELLULAR CORE

NON-PRESSURE-RATED PVC PIPE



DELIVERING GOOD WATER TO YOU



ASTM D2949 / D2665  
ASTM D1784 Cell Class 12454  
ANSI/NSF 61/14, Uniform Plumbing Code

ASTM F891  
ASTM D4396 Cell Class 11432  
ANSI/NSF 61/14, Uniform Plumbing Code

## MARKETS



Plumbing



Drain Waste Vent

## DESCRIPTION



SOLID CORE	PIPE SIZES:	PIPE COLOR:
<b>Nominal Laying Length:</b> 10/20 feet <i>(Laying length tolerances are in accordance with ASTM standards)</i>	<b>1¼", 1½", 2", 2½", 3", 4", 6", 8", 10", 12", 14", 16"</b>	<input type="checkbox"/> White
CELLULAR CORE	PIPE SIZES:	PIPE COLOR:
<b>Nominal Laying Length:</b> 10/20 feet <i>(Laying length tolerances are in accordance with ASTM standards)</i>	<b>1½", 2", 3", 4", 6"</b>	<input type="checkbox"/> White

ASTM D2665
Schedule 40
ASTM F891
Schedule 40



## BENEFITS



### INSTALLATION

Lightweight, great for manual installation.

Field-cut with a power saw or handsaw; bevel without complicated machinery.

Does not need lining, wrapping, coating, or cathodic protection to prevent galvanic corrosion.



### FEATURES

Unaffected by corrosive elements: sewer gas, sulfuric acid, alkaline, or acidic soils.

Consistency in carrying capacity (flow coefficient, C=150), for savings in pumping costs and size of the pipe.

Structurally sound joints provide a rigid connection.



# Solvent Weld DWV **SOLID/CELLULAR CORE**

NON-PRESSURE-RATED PVC PIPE

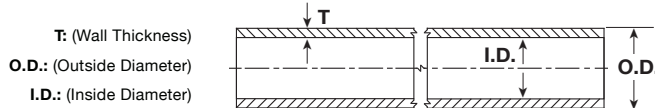


DELIVERING GOOD WATER TO YOU

## SUBMITTAL AND DATA SHEET

### Solid Core: ASTM D2949

PIPE SIZE (IN)	AVG. O.D. (IN)	NOM. I.D. (IN)	MIN. T. (IN)	PRESSURE RATING (PSI)	APPROX. WGT (LBS/FT)	PIPE STIFFNESS (PSI)
3	3.250	2.980	0.125	None	0.800	115



**Product Standard:** ASTM D2949

**Pipe Compound:** ASTM D1784 Cell Class 12454

**Certification:** ANSI/NSF 61, ANSI/NSF 14\*

**Pipe End Finish:** Plain End

**Nominal Laying Length:** 10/20 feet

(Laying length tolerances are in accordance with ASTM standards)

**Installation:** JM Eagle™ Solvent Weld Installation Guide

Manning Coefficient (n) = 0.009

### Solid Core: ASTM D2665: Schedule 40

PIPE SIZE (IN)	AVG. O.D. (IN)	NOM. I.D. (IN)	MIN. T. (IN)	PRESSURE RATING (PSI)	APPROX. WGT (LBS/FT)	PIPE STIFFNESS (PSI)
1¼	1.660	1.363	0.140	370	0.439	1,397
1½	1.900	1.593	0.145	330	0.525	1,008
2	2.375	2.049	0.154	280	0.705	596
2½	2.875	2.445	0.203	300	1.118	784
3	3.500	3.042	0.216	260	1.463	509
4	4.500	3.998	0.237	220	2.083	307
5	5.563	5.016	0.258	190	2.822	205
6	6.625	6.031	0.280	180	3.663	154
8	8.625	7.942	0.322	160	5.512	104
10	10.750	9.976	0.365	140	7.815	78
12	12.750	11.889	0.406	130	10.333	64
14	14.000	13.073	0.437	130	12.220	60
16	16.000	14.940	0.500	130	15.980	60

**Product Standard:** ASTM D2665

**Pipe Compound:** ASTM D1784 Cell Class 12454

**Certification:** ANSI/NSF 61, ANSI/NSF 14\*

**Pipe End Finish:** Bell End\*, Plain End

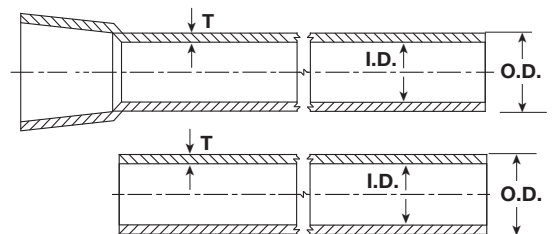
**Nominal Laying Length:** 10/20 feet

(Laying length tolerances are in accordance with ASTM standards)

**Installation:** JM Eagle™ Solvent Weld Installation Guide

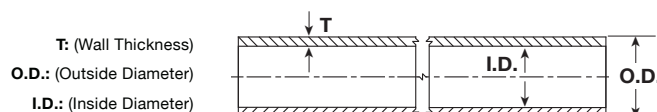
Manning Coefficient (n) = 0.009

Hazen-Williams Coefficient (c) = 150



### Cellular Core: ASTM F891: Schedule 40

PIPE SIZE (IN)	AVG. O.D. (IN)	NOM. I.D. (IN)	MIN. T. (IN)	APPROX. WGT (LBS/FT)	PIPE STIFFNESS (PSI)
1½	1.900	1.593	0.145	0.383	600
2	2.375	2.049	0.154	0.500	300
3	3.500	3.042	0.216	1.050	300
4	4.500	3.998	0.237	1.450	200
6	6.625	6.031	0.280	2.450	120



**Product Standard:** ASTM F891

**Pipe Compound:** ASTM D4396 Cell Class 11432

**Certification:** ANSI/NSF 61, ANSI/NSF 14\* Uniform Plumbing Code\*

**Pipe End Finish:** Plain End

**Nominal Laying Length:** 10/20 feet

(Laying length tolerances are in accordance with ASTM standards)

**Installation:** JM Eagle™ Solvent Weld Installation Guide

Manning Coefficient (n) = 0.009

\*Supply may vary based on plant location. Please call regarding availability.



This information may have been updated. Please visit [www.jmeagle.com](http://www.jmeagle.com) for all updated information and warranty details.

**THIS PRODUCT IS MADE IN AMERICA**

**CUSTOMER SERVICE: 1.800.621.4404**

PRINTED JUNE 2018 REV5